



Madison, Wisconsin

CITY OF MADISON

CITY ENGINEERING DIVISION

DEPARTMENT OF PUBLIC WORKS

PLAN OF PROPOSED IMPROVEMENT

ROBIN GREENWAY RESTORATION

PUBLIC IMPROVEMENT PROJECT APPROVED

APPROVED DATE

BY THE COMMON COUNCIL OF MADISON, WISCONSIN

PUBLIC IMPROVEMENT DESIGN APPROVED BY:

James Wolfe
City Engineer

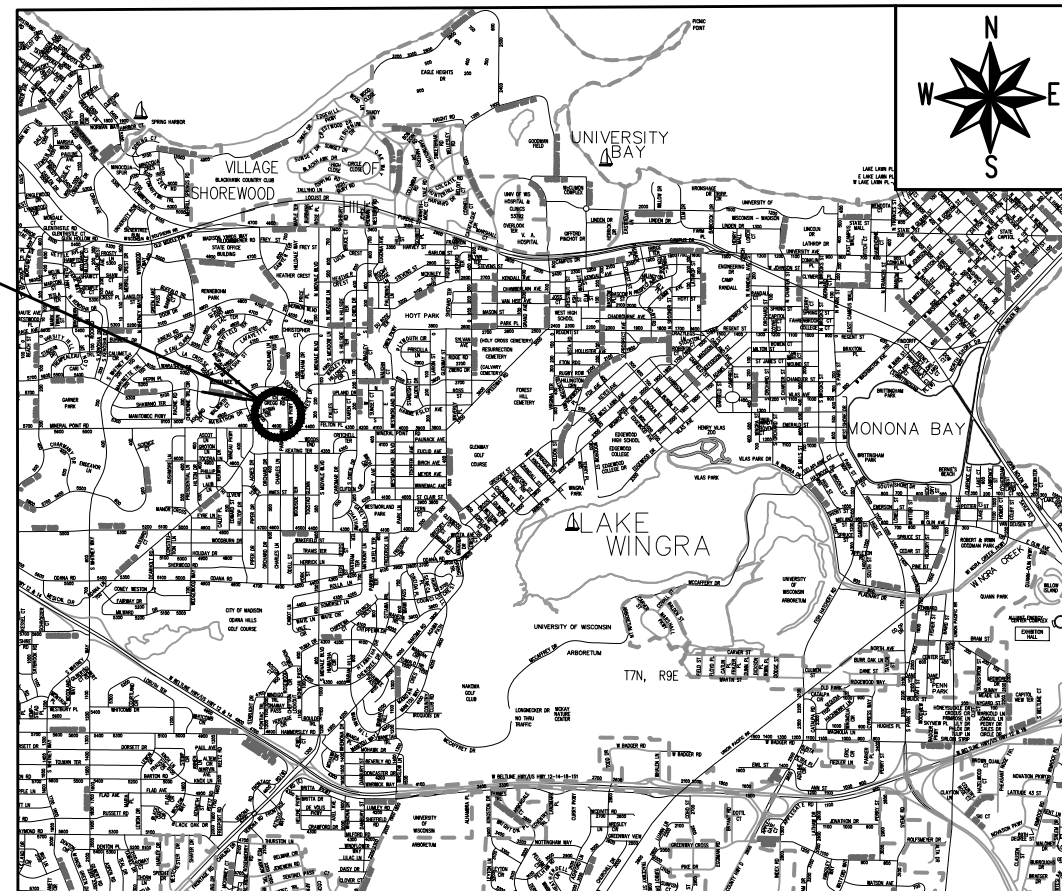
10/12/2023
Date

INDEX OF SHEETS

SHEET NO. 1	COVER SHEET
SHEET NO. L1	CLEARING PLAN - NORTH AREA
SHEET NO. L2	CLEARING PLAN - SOUTH AREA
SHEET NO. L3	SEEDING PLAN - NORTH AREA
SHEET NO. L4	SEEDING PLAN - SOUTH AREA
SHEET NO. L5	PLANTING PLAN - NORTH AREA
SHEET NO. L6	PLANTING PLAN - SOUTH AREA

CITY PROJECT NO. 14412
CONTRACT NO. 9334

PROJECT LOCATION



UTILITY CONTACTS

MG&E (Gas): Roger Ahles 608-252-5682
MG&E (Elec): Keo Chansavath 608-252-4577
AT&T: Matthew Vachalik 262-707-6216

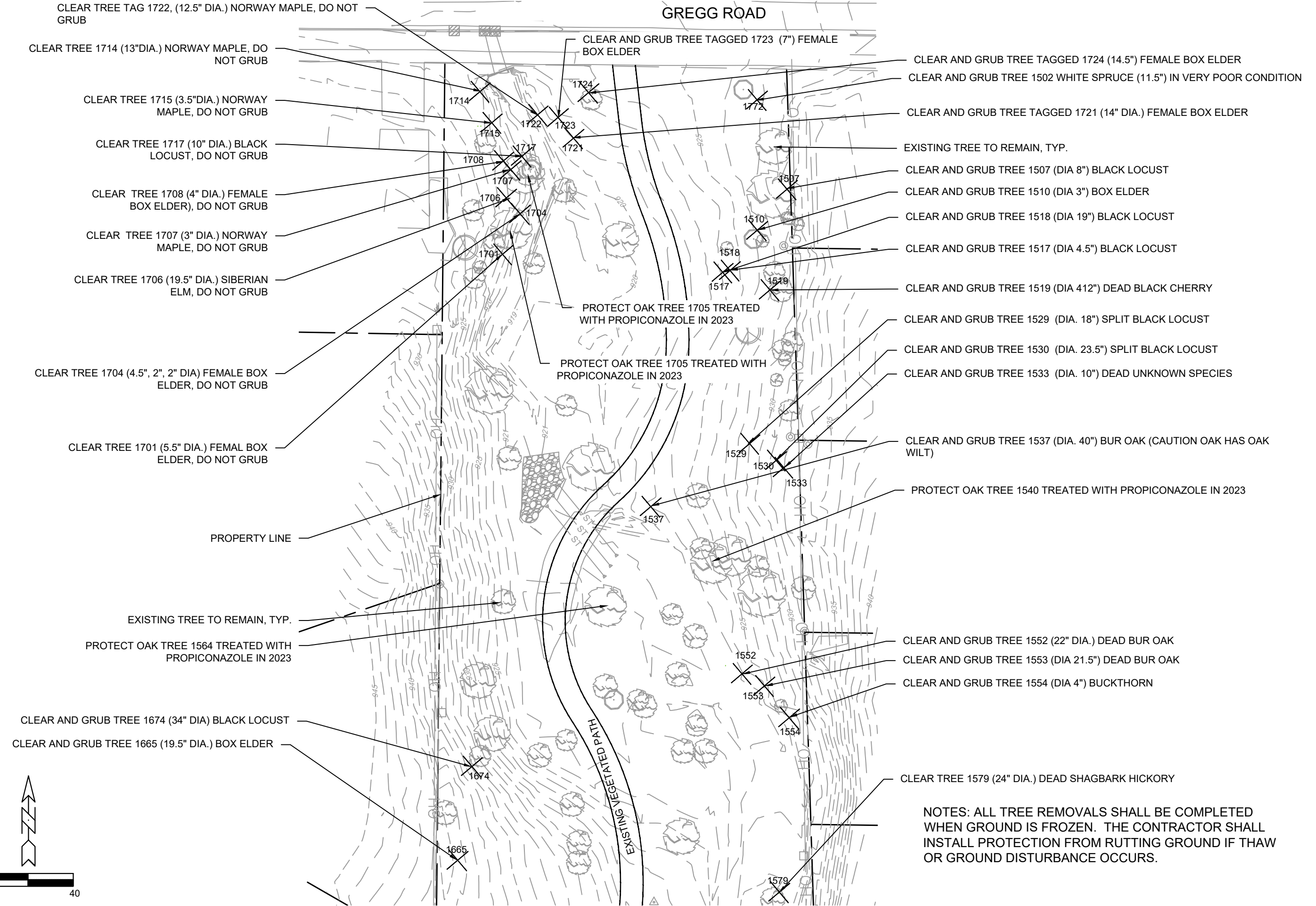
PLOT SCALE: 1:1_XREF

PLOT NAME: ---

REV. DATE: 9/19/2023 6:35 PM

ORIGINATOR: CITY_OF_MADISON

GREGG ROAD



CLEAR TREE TAG 1722, (12.5" DIA.) NORWAY MAPLE, DO NOT GRUB

CLEAR TREE 1714 (13"DIA.) NORWAY MAPLE, DO NOT GRUB

CLEAR TREE 1715 (3.5"DIA.) NORWAY MAPLE, DO NOT GRUB

CLEAR TREE 1717 (10" DIA.) BLACK LOCUST, DO NOT GRUB

CLEAR TREE 1708 (4" DIA.) FEMALE BOX ELDER, DO NOT GRUB

CLEAR TREE 1707 (3" DIA.) NORWAY MAPLE, DO NOT GRUB

CLEAR TREE 1706 (19.5" DIA.) SIBERIAN ELM, DO NOT GRUB

CLEAR TREE 1704 (4.5", 2", 2" DIA) FEMALE BOX ELDER, DO NOT GRUB

CLEAR TREE 1701 (5.5" DIA.) FEMAL BOX ELDER, DO NOT GRUB

PROPERTY LINE

EXISTING TREE TO REMAIN, TYP.

PROTECT OAK TREE 1564 TREATED WITH PROPICONAZOLE IN 2023

CLEAR AND GRUB TREE 1674 (34" DIA) BLACK LOCUST

CLEAR AND GRUB TREE 1665 (19.5" DIA.) BOX ELDER

CLEAR AND GRUB TREE TAGGED 1723 (7") FEMALE BOX ELDER

CLEAR AND GRUB TREE TAGGED 1724 (14.5") FEMALE BOX ELDER

CLEAR AND GRUB TREE 1502 WHITE SPRUCE (11.5") IN VERY POOR CONDITION

CLEAR AND GRUB TREE TAGGED 1721 (14" DIA.) FEMALE BOX ELDER

EXISTING TREE TO REMAIN, TYP.

CLEAR AND GRUB TREE 1507 (DIA 8") BLACK LOCUST

CLEAR AND GRUB TREE 1510 (DIA 3") BOX ELDER

CLEAR AND GRUB TREE 1518 (DIA 19") BLACK LOCUST

CLEAR AND GRUB TREE 1517 (DIA 4.5") BLACK LOCUST

CLEAR AND GRUB TREE 1519 (DIA 412") DEAD BLACK CHERRY

CLEAR AND GRUB TREE 1529 (DIA. 18") SPLIT BLACK LOCUST

CLEAR AND GRUB TREE 1530 (DIA. 23.5") SPLIT BLACK LOCUST

CLEAR AND GRUB TREE 1533 (DIA. 10") DEAD UNKNOWN SPECIES

CLEAR AND GRUB TREE 1537 (DIA. 40") BUR OAK (CAUTION OAK HAS OAK WILT)

PROTECT OAK TREE 1540 TREATED WITH PROPICONAZOLE IN 2023

CLEAR AND GRUB TREE 1552 (22" DIA.) DEAD BUR OAK

CLEAR AND GRUB TREE 1553 (DIA 21.5") DEAD BUR OAK

CLEAR AND GRUB TREE 1554 (DIA 4") BUCKTHORN

CLEAR TREE 1579 (24" DIA.) DEAD SHAGBARK HICKORY

NOTES: ALL TREE REMOVALS SHALL BE COMPLETED WHEN GROUND IS FROZEN. THE CONTRACTOR SHALL INSTALL PROTECTION FROM RUTTING GROUND IF THAW OR GROUND DISTURBANCE OCCURS.

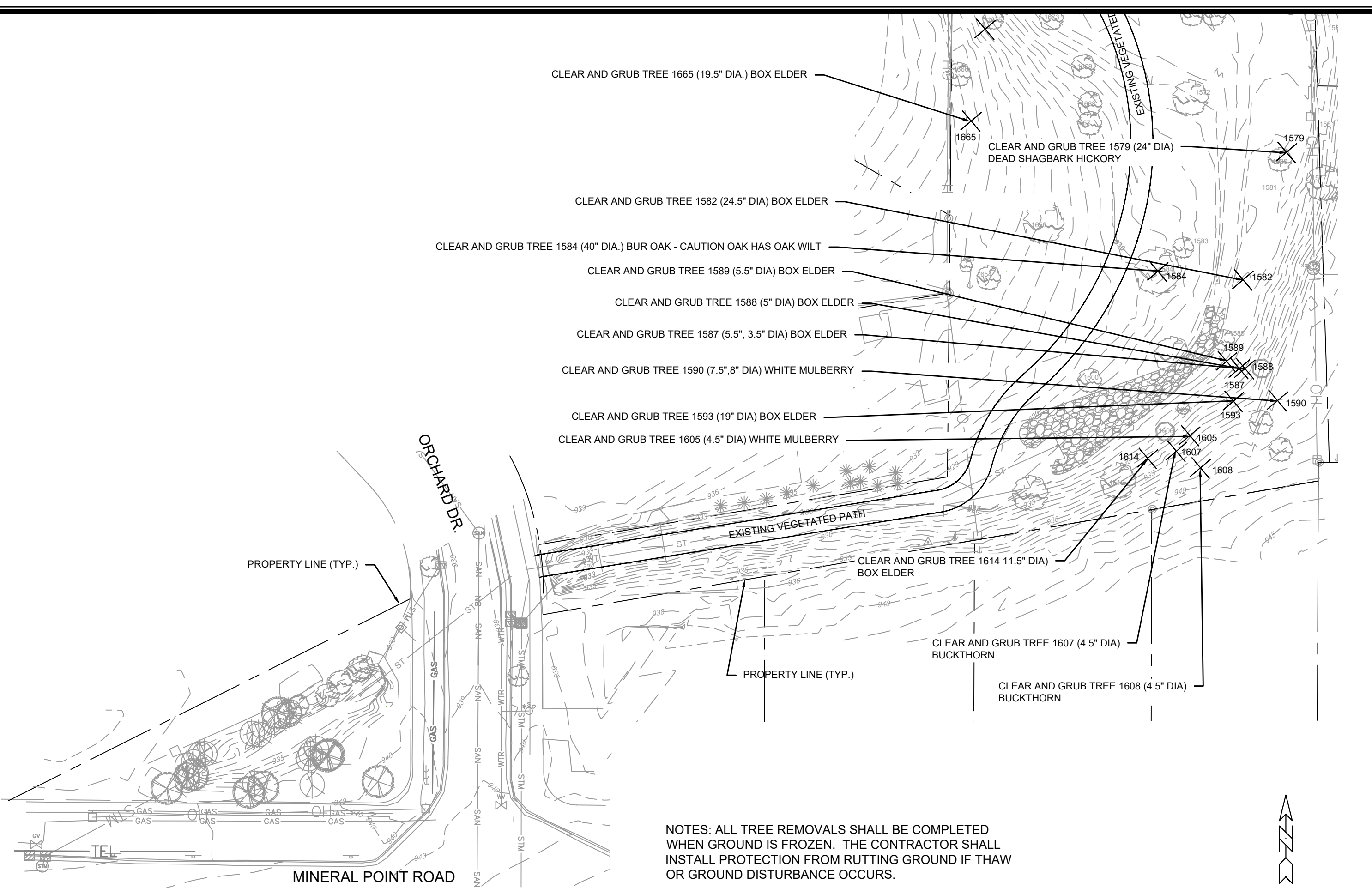
DATE	BY
REVISION	
Designed By: SCL	Date: 9/25/2023 11:19 AM
Scale:	
MARK	14412

14412
 ORCHARD DRIVE
 9333
 CONTRACT NO.: 14412

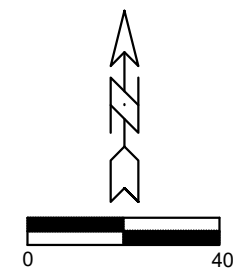
CLEARING PLAN
 ROBIN GREENWAY IMPROVEMENTS
 M:\DESIGN\Projects\14412\CAD\Sewers\14412 Final Restoration Plan.dwg



14412
 L1

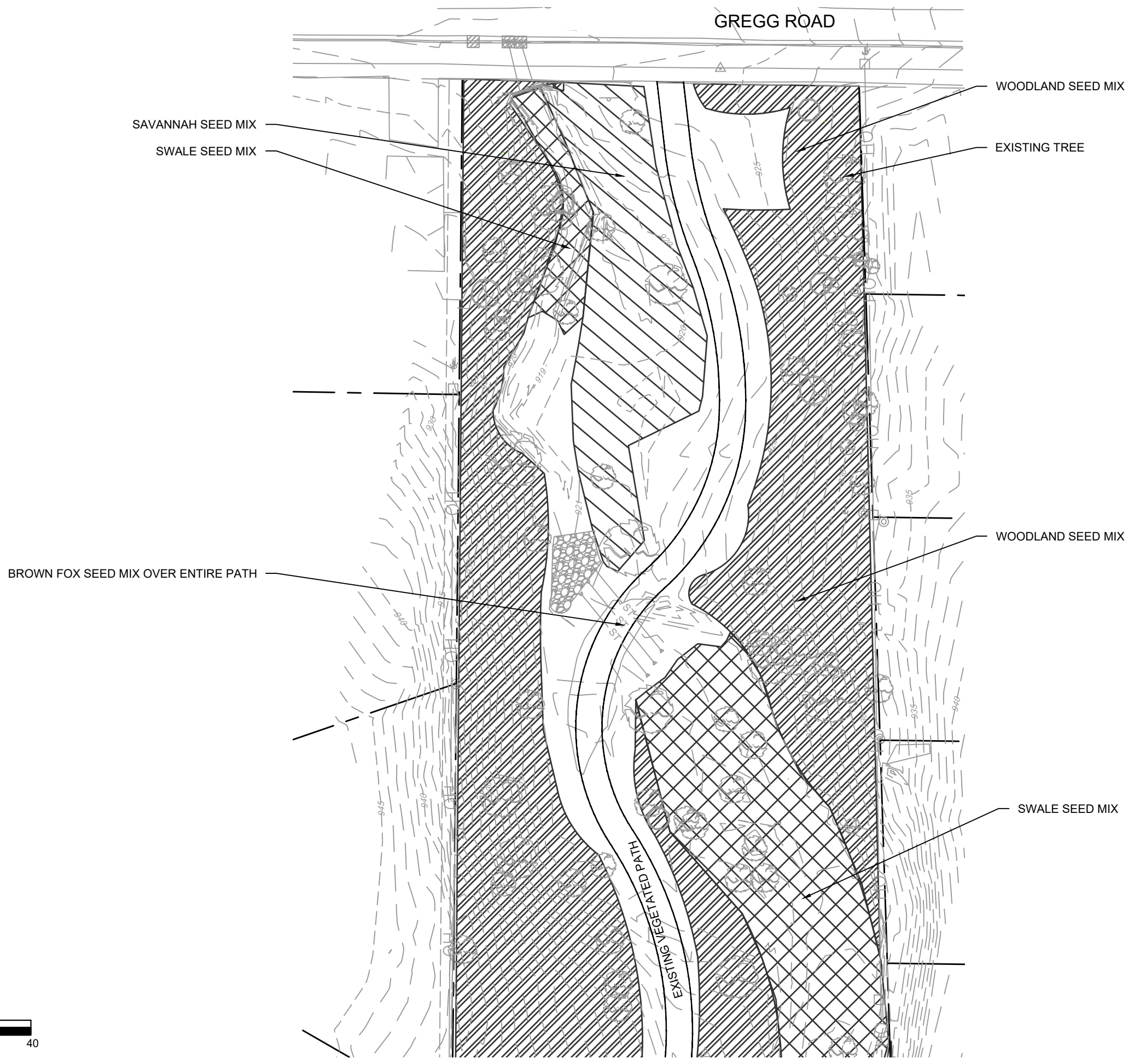
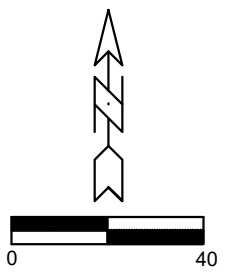


NOTES: ALL TREE REMOVALS SHALL BE COMPLETED WHEN GROUND IS FROZEN. THE CONTRACTOR SHALL INSTALL PROTECTION FROM RUTTING GROUND IF THAW OR GROUND DISTURBANCE OCCURS.



14412		ORCHARD DRIVE		9333	
CLEARING PLAN (SOUTH AREA)		ROBIN GREENWAY IMPROVEMENTS		CONTRACT NO.:	
14412		14412		14412	
L2		L2		L2	

M:\DESIGN\Projects\14412\CAD\Drawings\14412 Final Restoration Plan.dwg
 Designed By: SCL Date: 9/25/2023 11:19 AM Scale:



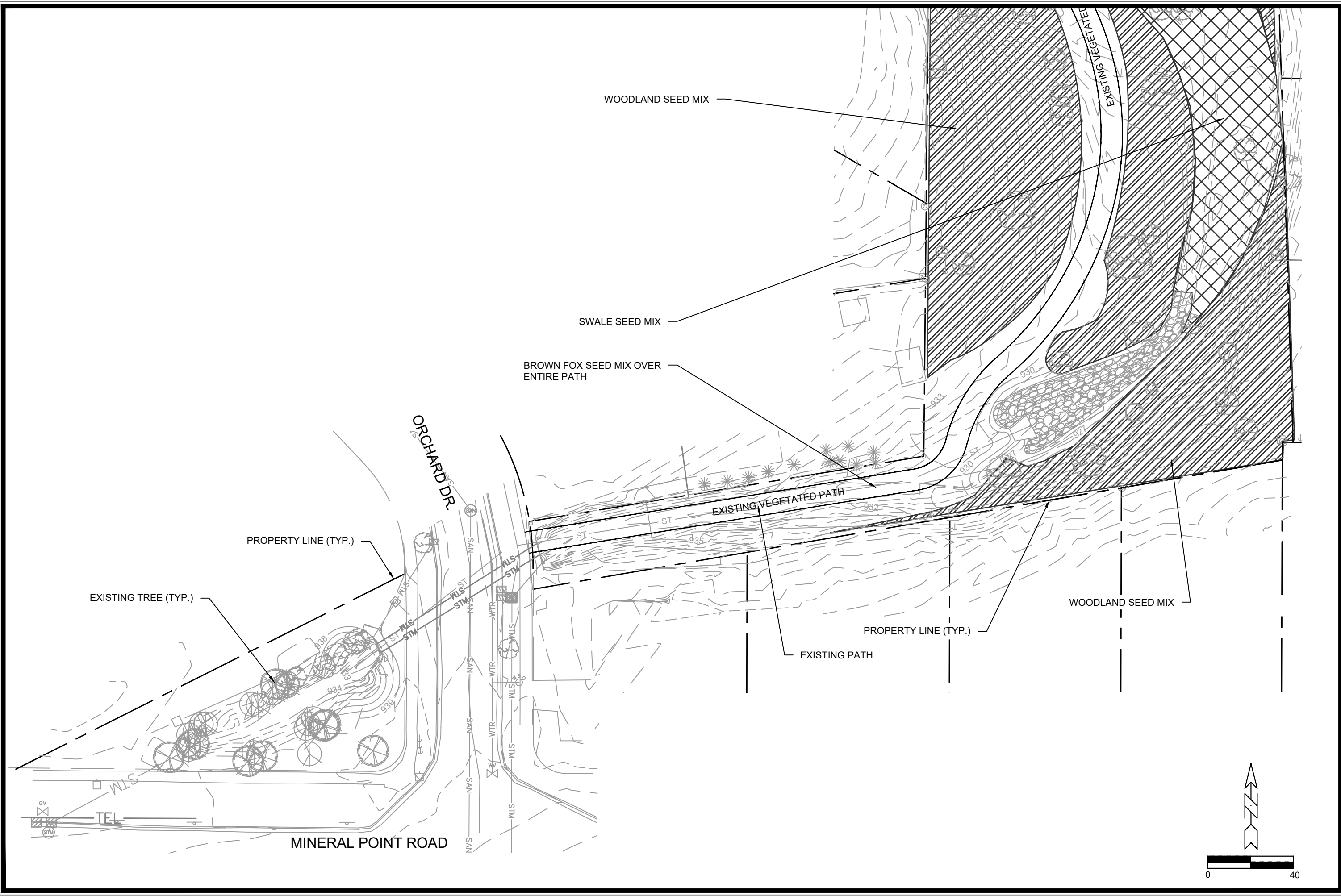
MARK	REVISION	DATE	BY
14412	14412	9/25/2023 1:19 AM	L3

14412
 ORCHARD DRIVE
 CONTRACT NO: 9334

SEEDING PLAN (NORTH AREA)
 ROBIN GREENWAY RESTORATION
 M:\DESIGN\Projects\14412\CAD\Sewers\14412 Final Restoration Plan.dwg



14412
 L3



MARK	REVISION	DATE	BY
14412	14412	9/25/2023 11:19 AM	L4

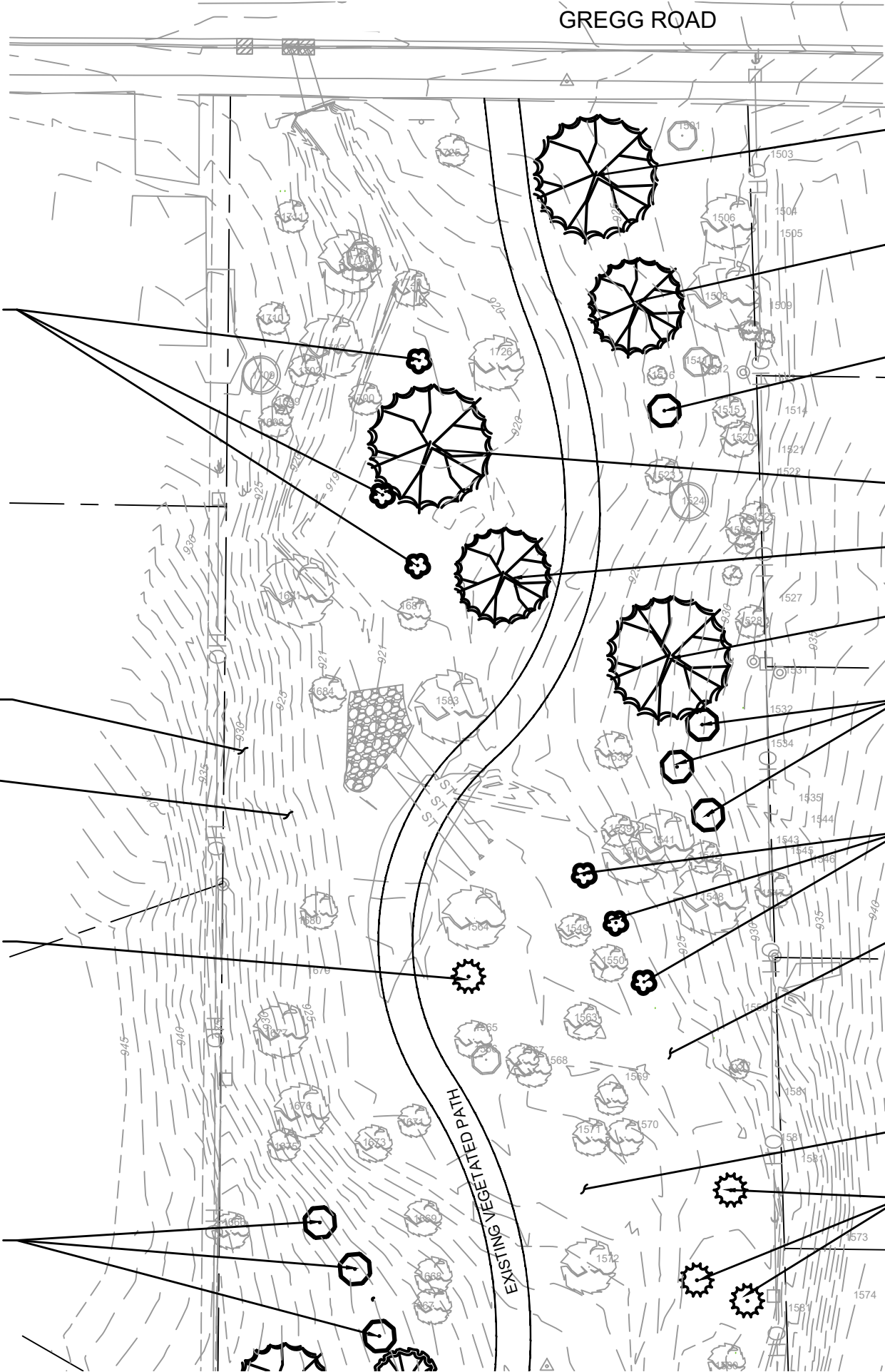
14412
 ORCHARD DRIVE
 9334
 CONTRACT NO:

SEEDING PLAN (SOUTH AREA)
 ROBIN GREENWAY RESTORATION
 M:\DESIGN\Projects\14412\CAD\Sewer\14412 Final Restoration Plan.dwg



14412
 L4

GREGG ROAD



(3) CEPHALANTHUS OCCIDENTALIS

(1) CARYA OVATA

(1) CARYA CORDIFORMIS

(1) VIBURNUM LENTAGO

(1) CARYA OVATA

(1) CARYA CORDIFORMIS

(1) CARYA OVATA

(1) FUTURE OAK (BY OTHERS) POST OAK WILT

(3) VIBURNUM LENTAGO

(1) FUTURE OAK (BY OTHERS) POST OAK WILT

(3) CEPHALANTHUS OCCIDENTALIS

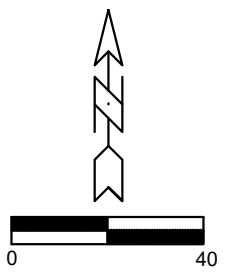
(1) STAPHLYEA TRIFOLIA

(1) FUTURE OAK (BY OTHERS) POST OAK WILT)

(3) VIBURNUM LENTAGO

(1) FUTURE OAK (BY OTHERS)

(3) STAPHLYEA TRIFOLIA



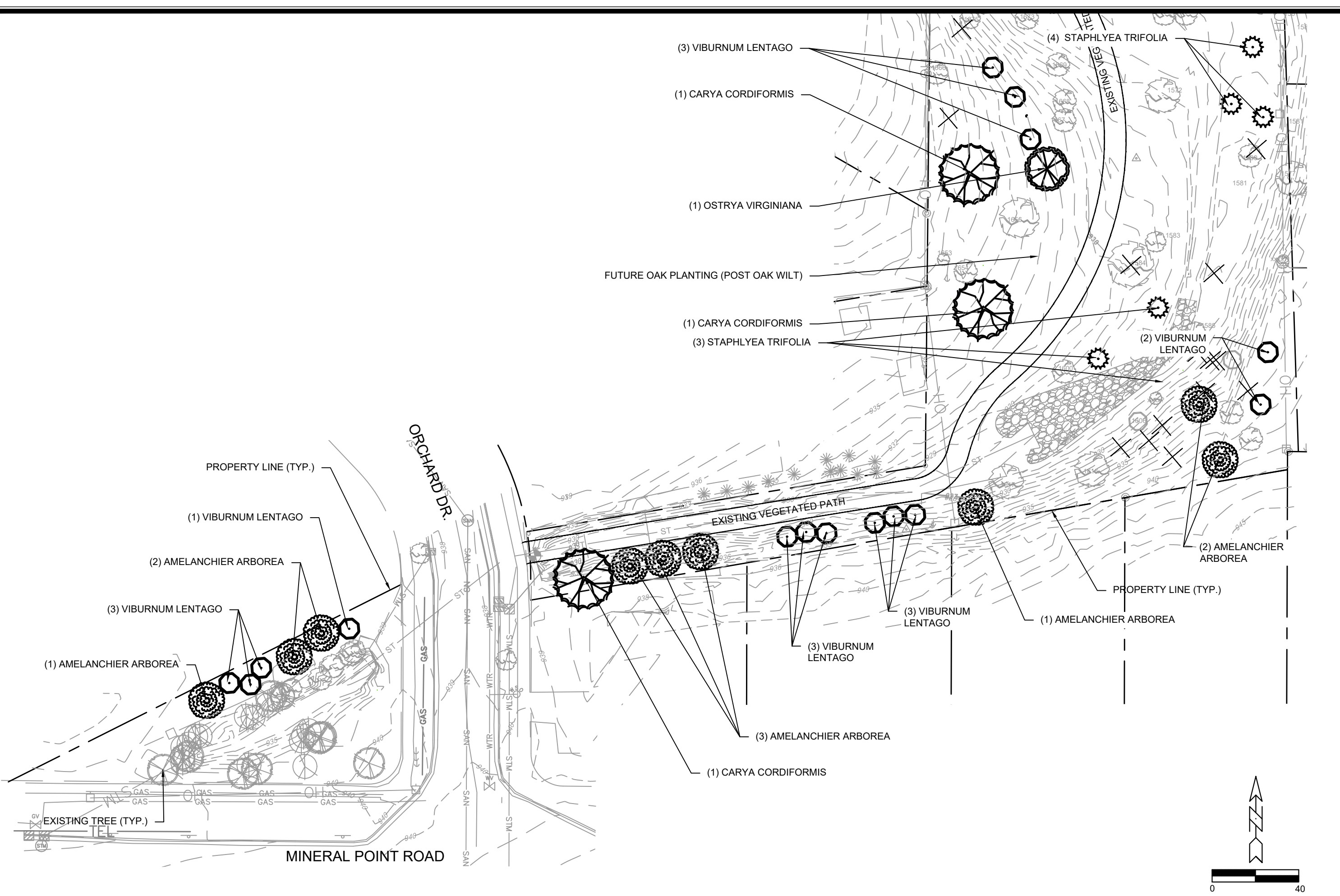
MARK	REVISION	DATE	BY
14412	14412	9/26/2023	L5

14412
 ORCHARD DRIVE
 9334
 CONTRACT NO:

PLANTING PLAN (NORTH AREA)
 ROBIN GREENWAY RESTORATION
 M:\DESIGN\Projects\14412\CAD\Sewer\14412 Final Restoration Plan.dwg



14412
 L5



MARK	REVISION	DATE	BY
14412	9/25/2023	1:19 AM	SCL

14412
 MADISON, WI
 CONTRACT NO: 9334

PLANTING PLAN (SOUTH AREA)
 ROBIN GREENWAY RESTORATION
 M:\DESIGN\Projects\14412\CAD\Servers\14412_Final_Restoration_Plan.dwg



14412
 L6